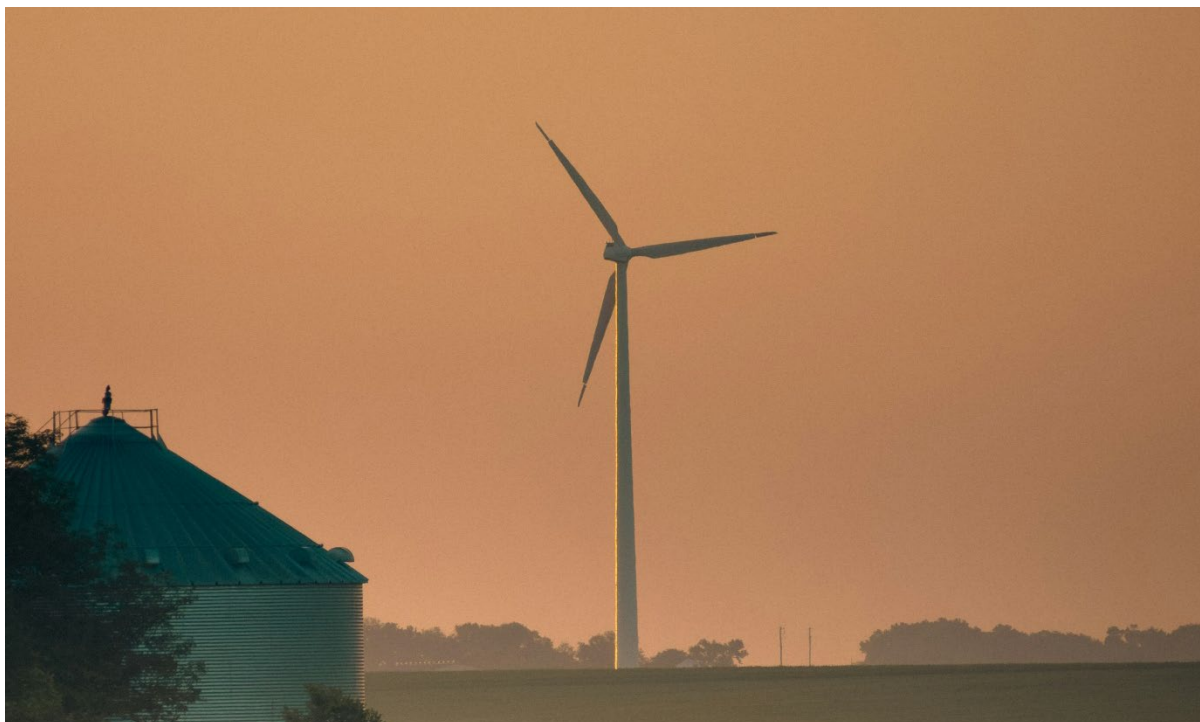




Practice Abstract 11: Training Modules to Help Farmers and Rural Stakeholders Adopt Renewable Energy



COUNTRY AND CLIMATIC ZONE

Pan-European

CONTACT

nlouvrou@white-research.eu

3 BENEFITS OF THE PRACTICE

- Supports farmers and practitioners with tailored training resources on renewable energy integration.
- Enhances knowledge and confidence for decision-making on sustainable energy practices.
- Encourages long-term behavioural change through accessible and adaptable learning materials.

PRODUCTION SYSTEM

N/A

KEYWORDS

Capacity Building, Renewable Energy, Farm-level Training, Agro-communities, Practical Modules



SUMMARY FOR PRACTITIONERS ON THE MAIN FINDING(S)/INNOVATIVE SOLUTION(S) – IN ENGLISH

The HarvRESt Capacity Building Material offers practical training content for farmers and rural actors. It focuses on how to understand, evaluate, and adopt renewable energy systems in agriculture, based on real project insights and community feedback.

LONGER DESCRIPTION – IN ENGLISH

The upcoming Capacity Building Material developed by the HarvRESt project is designed to deliver targeted learning content to support farmers, advisors, and other rural actors in navigating the complex landscape of renewable energy technologies in agriculture.

This material will include a variety of practical training components, structured around the needs and profiles of different user groups identified during HarvRESt's engagement work. The aim is to build not just knowledge, but also capacity and confidence to make informed choices about renewable energy options.

Key features include:

- Modular training content: covering technology basics, economic feasibility, regulatory issues, and social considerations
- Use-case driven scenarios: drawing directly from HarvRESt pilot experiences to ground learning in real situations
- Interactive formats: such as videos, infographics, quizzes, and printable guides for in-person or online delivery
- Adaptability: materials will be customisable for different regions and language contexts

The capacity building approach reflects a participatory philosophy, involving stakeholders in the co-design and testing of learning tools to ensure relevance and usability.

Ultimately, the deliverable aims to nurture energy literacy in rural communities and reinforce HarvRESt's other tools (like the Decision Support System and Knowledge Toolkit), helping ensure long-term uptake of sustainable energy solutions in agriculture.

ADDITIONAL DISSEMINATION AND COMMUNICATION MATERIAL(S)

Title/Description: HarvRESt Capacity Building Material

URL: https://eu-cap-network.ec.europa.eu/projects/harnessing-vast-potential-res-sustainable-farming_en#practice-abstract--172970